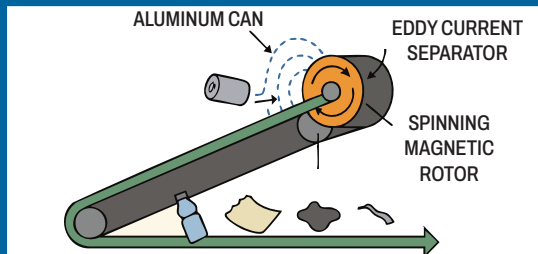


BEYOND THE CURB

COMMERCIAL NEWSLETTER

Volume 1

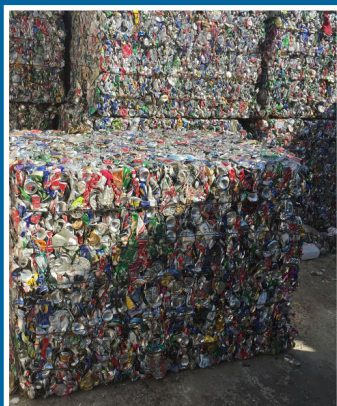
WELCOME! - STATE/CITY REQUIREMENTS - CONTACT INFORMATION - HAZARDOUS WASTE - RECYCLING WITH EDDY



RECYCLING: THE EDDY CURRENT!

Eddy currents help us separate aluminum from other metals without even touching them. Inside the eddy current separator, spinning magnets create a fast-changing magnetic field. As metals pass through, they generate electric currents that push them away from other materials.

Once separated, aluminum is baled and sent to specialized recycling facilities where it's melted down and made into new cans, car parts, or building materials—giving it a whole new life!



WANT TO SEE MORE?
FIND VIDEOS ON OUR WEBSITE!



WELCOME!

Welcome to our new and improved newsletter! We're here to bring you helpful resources, important updates, and practical tips to make waste management easier for you. From recycling reminders to waste-saving wins, we'll keep you in the loop (and out of the landfill). Together, we'll keep our community cleaner, greener, and more sustainable.

COLLECTION DAY CHECKLIST

Help us keep things clean, safe and running smoothly!

- Make sure the area around your collection bins is kept tidy. Keep lids closed and the floor swept.
- Sort smart. Double-check that materials are in the right bins. If something's out of place, please make corrections.
- Leave clear access. Don't block the collection area—our drivers need space to do their job safely and efficiently.
- Need help? Reach out if you have overflow, bulky items, or electronic waste. We're happy to assist!

UPDATE YOUR CONTACT INFO

Keep your account info current! Call/text 650-589-4020 or email info@ssfscavenger.com to update your contact details. That way, we can keep you in the loop on any service changes or important updates.

500 E. Jamie Court
So. San Francisco CA 94080

650.589.4020
info@ssfscavenger.com



HAZARDOUS WASTE DISPOSAL

Protect your health and the environment by safely handling and disposing of hazardous materials.

Auto parts, tires, batteries, flammables, chemicals, paint, pressure treated wood, sharps, fluorescent lamps and other hazardous wastes **are not** allowed inside your recycling, organics, or garbage bins. For information on proper disposal of hazardous waste, please visit www.smchealth.org/safe-waste-disposal, email hwh@smcgov.org, or call 650.372.6200. Blue Line Transfer also accepts some of these items, more information can be found at www.bluelinetransfer.com.



STATE & CITY REQUIREMENTS

State laws and local ordinances require all residential and commercial properties to have weekly recycling, organics, and garbage collection service.

How do I comply?

- Subscribe to weekly recycling, organics, and garbage service with bins sized to handle your waste volume.
- Inspect bins at least twice a year for contamination. Let employees and tenants know what was found and remind them how to sort correctly.
- Provide sorting instructions to employees and tenants within 14 days of move-in and at least once a year.
- Provide recycling and organics bins anywhere garbage bins are available (except restrooms). Make sure bins are accessible, clearly labeled, and appropriately sized. Use standard colors: blue for recycling, green for organics, and gray or black for garbage.

- **Organics Only Bin:** food scraps, food-soiled paper and yard trimmings. **No** traditional or bio/compostable plastics, this includes liner bags and plastic-lined paper cups, plates and takeout containers.
- **Paper Only Bin:** clean & dry paper. **No** liner bags.
- **Containers Only Bin:** empty glass bottles/jars (excluding lab glass), metal cans & foil, plastics bottles/tubs labeled #1, #2 & #5. **No** liner bags.
- **Cardboard Only Bin:** clean, dry & flattened corrugated boxes.
- **Garbage Only Bin:** non-hazardous trash that doesn't belong in your green or blue bins. Including plastic wrap and bags, styrofoam/styrene, plastic coated paper, pet waste, diapers and wipes.

BLUE LINE TRANSFER, INC.

500 E. Jamie Court • So. San Francisco

Public Disposal & Recycling Facility
Monday-Friday 6:00 a.m. - 4:30 p.m.
Saturday 8:00 a.m. - 4:30 p.m.

- Visit www.bluelinetransfer.com to view our list of competitive rates.
- Arrive at Blue Line with load covered and secured. Uncovered loads incur a \$20 fee.

B.O.P.A. CENTER
Monday-Friday 7:00 a.m. - 4:00 p.m.
Saturday 8:00 a.m. - 4:00 p.m.

No-charge drop-off for San Mateo County residents

- Televisions, laptops, computer monitors
- Car batteries, antifreeze, motor oil & filters
- Latex & oil-based paint—in clearly labeled containers, 10 gallon limit
- Sharps containers

Public Buy-Back Center
Monday-Friday 7:00 a.m. - 1:00 p.m.

- For post consumer containers with California Redemption Value (CRV)

What's a recycler's favorite kind of music?
Heavy metal!



Illegal Dumping & Scavenging?

Reduce illegal dumping and scavenging by securing your waste enclosure or individual collection bins. Purchase your own combination lock(s) and provide us with the combination. Or, buy one of our locks. Contact us at 650.589.4020 to make arrangements. Also consider installing lighting, cameras, and appropriate signs.

