

SB 1383

THANK YOU FOR  
SORTING SMART!

WE RECYCLE  
CHRISTMAS TREES

COLLECTION DAY  
CHECKLIST

HAZARDOUS  
WASTE DISPOSAL

HOLIDAY  
COLLECTION  
REMINDERS

BLUE LINE  
TRANSFER  
INFORMATION

SSFSCAVENGER.COM

## Did You Know?

State law (SB 1383) and local ordinances require all residential and commercial properties to have weekly recycling, organics, and garbage collection service.

Please follow these tips:

1. Place food scraps, food-soiled paper, and yard trimmings directly into your green "Organics Only" bin. No plastics are allowed — including those labeled as bio/compostable.
2. Place clean/dry paper directly into your blue "Paper Only" recycling bin. Do not use liner bags.
3. Place clean/dry, flattened corrugated boxes directly into your blue "Cardboard Only" recycling bin. In the absence of a cardboard bin, place in your paper recycling bin.
4. Place empty recyclable containers directly into your blue "Containers Only" recycling bin. This includes glass bottles/jars, metal cans/foil, and plastic bottles and tubs numbered 1, 2 or 5. Do not use liner bags.
5. Place non-hazardous trash that is not allowed in your green or blue bins in the garbage. Common items include plastic wrap and bags, Styrofoam/styrene, plastic-coated paper, worn-out clothing and linens, broken housewares and toys, diapers and wipes, and pet waste.

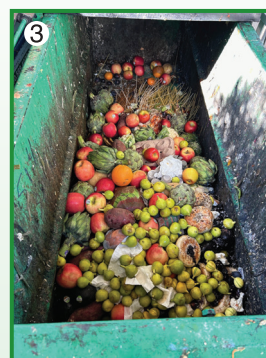
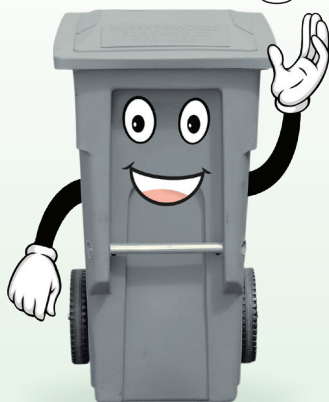
Thank you  
for sorting smart!



## Thank You for Sorting Smart!

Our community is full of businesses that work hard to sort waste correctly. JC Kitchen (photo 1), Oro & Oak (photo 2), and Trader Joe's (photo 3) are excellent examples. We recognize and appreciate their efforts!

Keep up the good work!



SSF  
SCAVENGER  
COMPANY

YOUR RECYCLING,  
ORGANICS &  
GARBAGE SERVICE  
PROVIDER

500 East Jamie Court  
South San Francisco,  
CA 94080  
Phone: 650.589.4020

## We Recycle Christmas Trees

- Remove stands and all decorations including lights and tinsel.
- Do not bag or tie trees.
- Cut trees in half if taller than 6 ft.
- Place trees near your garbage and recycling carts/bins for collection.
- Contact us to schedule collection. Trees are collected from multifamily residential properties at no charge. A \$10-\$20 fee is charged per tree (depending on size) collected from a business.



## BLUE LINE TRANSFER, INC.

500 East Jamie Court ♦ South San Francisco  
Public Disposal and Recycling Facility

Monday-Friday, 6 a.m. – 4:30 p.m.  
Saturday, 8 a.m. – 4:30 p.m.

- Competitive disposal rates
- Special rates for cooking oil, tires, appliances/electronics, fluorescent lamps & batteries

Note that all loads entering Blue Line must be covered and secured. **There is an additional \$20 fee charged for each uncovered load.**

### B.O.P.A. Center

Monday-Friday, 7 a.m. - 4 p.m.  
Saturday, 8 a.m. - 4 p.m.

- No-charge drop-off for San Mateo County residents
  - ✓ Televisions, laptops, computer monitors
  - ✓ Car batteries, antifreeze, motor oil & filters
  - ✓ Latex & oil-based paint—in clearly labeled containers, 10 gallon limit
  - ✓ Sharps containers

### Public Buy-Back Center

Monday-Friday, 7 a.m. – 1 p.m.

- For containers with California Redemption Value (CRV)

[www.bluelinetransfer.com](http://www.bluelinetransfer.com)

## COLLECTION DAY CHECKLIST

- ✓ Maintain a safe and litter-free collection area. Put all garbage and recycling inside the appropriate collection bins. Keep lids closed and the ground swept.
- ✓ Confirm proper sorting. If materials have been misplaced, take corrective action.
- ✓ Do not block access to the collection area.
- ✓ Contact us for help with overflow, electronic waste, or large items.

*Your efforts are appreciated. Thank you!*

## HAZARDOUS WASTE DISPOSAL

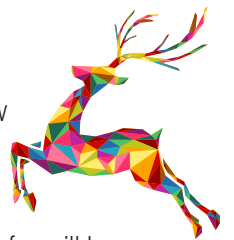
Auto parts, tires, batteries, flammables, chemicals, paint, pressure-treated wood, sharps, fluorescent lamps and other hazardous wastes are **not** allowed inside your recycling, organics, or garbage bins.

For information on proper disposal of hazardous waste, please visit [www.smchealth.org/safe-waste-disposal](http://www.smchealth.org/safe-waste-disposal), email [hww@smcgov.org](mailto:hww@smcgov.org), or call 650.372.6200. Blue Line Transfer does accept some of these items, details in left column.



## HOLIDAY SERVICE REMINDERS

There will be no collection service on Christmas Day or New Year's Day. Service normally scheduled for Wednesdays will be provided either the day before or after each holiday.



South San Francisco Scavenger offices and Blue Line Transfer will be closed on Christmas Day and New Year's Day. There will be limited operating hours on Christmas Eve and New Year's Eve: 7a to noon for our offices and 6a to noon for Blue Line.



500 East Jamie Court  
South San Francisco, CA 94080

Monday-Friday, 7am-4:30pm

Phone/Text: 650.589.4020

E-mail: [info@ssfscavenger.com](mailto:info@ssfscavenger.com)

Get waste-related tips!  
Follow us @ssfscavenger



Need help  
sorting your  
waste?

Scan me!

