

SOUTH SAN FRANCISCO
SCAVENGER
 COMPANY, INC.
650.589.4020
www.ssfscavenger.com

RECYCLING GUIDE

Sort Smart

The label on each collection bin shows common items that belong inside. Use the Sort Smart Recycling Guide at ssfscavenger.com for help sorting additional items.

This QR code will take you straight to it!



Missing a bin or need a new label?

Ask your property owner or manager to contact us for assistance. In the absence of an Organics cart or bin, food scraps and food-soiled paper belong in the Garbage. In the absence of a Cardboard cart or bin, boxes can be flattened, cut down, and recycled with Paper.

Look for the label!



Keep it clean!

Please do not contaminate recyclables. Scrape and rinse food and beverage containers before placing in the Container recycling bin. Only put clean, dry paper in the Paper bin. Keep bin lids closed to keep out rain and critters.

Questions?

Review the information on pages 3 and 4 of this Guide. Please print and post these pages for others to see!

Free Tote Bags

Durable, easy to clean, tote bags are available. They make it easy to collect recyclables in your home and transport them to the Paper and Container bins you share with your neighbors. Visit our office to get yours!



Please Reduce & Reuse

- Choose reusable, durable products and avoid single-use disposable items.
- Give unwanted but still usable items a chance for a second life. Donate, sell, or find another way to pass items along. Consider posting on websites like Facebook Marketplace, Nextdoor.com, eBay.com or Craigslist.org.
- Prevent food waste. Learn how by visiting SaveTheFood.com, StopFoodWaste.org, and shfb.org.
- Reduce junk mail. Visit CatalogChoice.org and BayAreaRecycling.org for instructions.

BLUE LINE
TRANSFER, INC.

Bring it to Blue Line!

Blue Line Transfer is a public disposal and recycling facility located at 500 East Jamie Court in South San Francisco.

- **CRV buy-back** (limited hours)
- **Free drop-off for residents:**
 - ✓ Televisions, laptops, computer monitors
 - ✓ Car batteries, antifreeze, motor oil & filters
 - ✓ Latex & oil-based paint
 - ✓ Sharps containers
- **Special rates for:**
 - ✓ Household batteries
 - ✓ Cooking oil
 - ✓ Fluorescent lamps & tubes
 - ✓ Appliances/Electronics
 - ✓ Tires

No appointment is necessary. All loads must be covered and secure. Visit bluelinetransfer.com for hours, prices, and more information.

Large Items or Overflow?

We are happy to schedule a special pick-up. Please call us at 650.589.4020 to make arrangements. Or, bring your items to Blue Line Transfer. Charges may apply.



Document Destruction Service

No Trace Mobile Document Destruction provides convenient destruction services for sensitive paper documents. Appointments are required. Most appointments are completed at Blue Line Transfer but off-site appointments are also available. Service charges can be paid by credit card, check or cash. Charges are competitive and depend on type and volume of material and location of appointment.



*Minimum fee for appointments completed at Blue Line Transfer is \$40.

*Minimum fee for appointments completed off-site is \$85.

Put hazardous waste in the right place

Please protect the health and safety of our workers by properly disposing of sharps, paint, toxic cleaners, and other hazardous materials.



Call the the San Mateo County Household Hazardous Waste Program at 650.363.4718 or visit www.smchealth.org/hhw to schedule a free drop-off appointment. Alternatively, some hazardous items may be taken to Blue Line Transfer without making an appointment. See left-hand column for more information.



SOUTH SAN FRANCISCO
SCAVENGER
— COMPANY, INC. —

www.ssfscavenger.com

500 East Jamie Court
South San Francisco, CA 94080
Monday-Friday, 7am-4:30pm

Phone/Text: **650.589.4020**
E-mail: info@ssfscavenger.com

Interested in receiving waste-related tips?



Follow Us



You can find us by searching for [@ssfscavenger](https://www.instagram.com/ssfscavenger).



Printed on post-consumer recycled fiber.
Please recycle again!

SSFSC0621

SORT SMART

These items are **NOT** allowed in a recycling bin.
Please put them in the GARBAGE.



Aseptic cartons & pouches



Bike tires & inner tubes



Bungee cords & tie-downs



Hoses, pipes & tubes



Incandescent light bulbs



Kitchenware/houseware



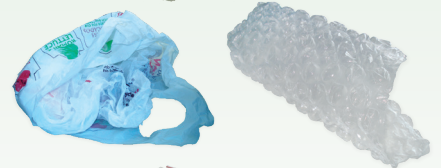
Linens & rugs



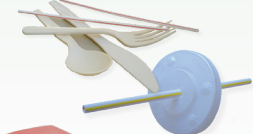
Pillows & stuffed animals



Plastic bags & wrap



Plastic straws & utensils



Plastic toys



Shoes, clothes & hangers (all kinds)



Styrofoam



Toothpaste & lotion tubes



Pizza boxes & other food-soiled paper

Food-soiled paper, food scraps, and yard trimmings all belong in a green **ORGANICS** bin. In the absence of a green bin, they are best placed in the GARBAGE.



Don't know where it goes?
Use our QR code to find out!



SOUTH SAN FRANCISCO
SCAVENGER
COMPANY, INC.

650.589.4020 ♦ www.ssfscavenger.com

These items are **HAZARDOUS** and require special handling.

Please do **NOT** put them in the **GARBAGE** or **RECYCLING**.

Automotive fluids, filters, tires & batteries

Computers, televisions & other electronics

Fertilizer & pesticide

Fluorescent tubes/bulbs

Holiday lights, power cords & cables

Household batteries

Paint

Pressurized tanks

Sharps

Toxic cleaning products



Don't know where it goes?
Use our QR code to find out!



SOUTH SAN FRANCISCO
SCAVENGER
— COMPANY, INC. —

650.589.4020 www.ssfcavenger.com

The San Mateo County Household Hazardous Waste Program accepts many of these items. Please call

650.363.4718 or visit www.smchealth.org/hhw for more information and to schedule a free drop-off appointment.

Blue Line Transfer is also able to accept some of these items.

No appointment necessary but fees may apply. Please call

650.589.5511 or visit www.bluelinetransfer.com for more information.