

WASTEMATTERS

FEBRUARY 2020

CALIFORNIA LAWS REQUIRE WASTE SORTING

➤ California Assembly Bill 1826 **requires that all businesses generating 4 cubic yards or more of waste per week implement an organics recycling program.**

➤ Assembly Bill 341 **requires businesses and multifamily residential complexes with 5 or more living units to separate recyclable materials from their garbage.**

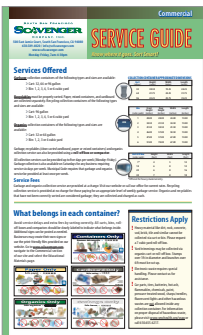


EFFECTIVE JULY 1, 2020, Assembly Bill 827 amends AB 1826 & AB 341! The new legislation requires the provision of “front of house” organic waste collection bins in all restaurants and cafeterias where patrons bus their own tables.

For more information on AB 1826, AB 341 and AB 827, please visit www.CalRecycle.ca.gov. Contact us today for help implementing new or additional recycling services.

KNOW WHERE IT GOES — RECYCLE RIGHT!

Foreign import policy changes continue to negatively impact recycling. There is no tolerance for contaminated materials. Proper sorting is critical! Please take the time to review your recycling program and adjust as needed.



To avoid service delays and additional charges:

- ✓ Make sure all collection bins are clearly and correctly labeled.
- ✓ Confirm that paper is being sorted separately from recyclable containers.
- ✓ Regularly remind all staff, tenants, and contractors to sort waste items correctly and to report any problems.
- ✓ Contact us for assistance. We can provide training, collection bin signs, and recycling guides.

CALIFORNIA LAWS
REQUIRE WASTE
SORTING

◆
KNOW WHERE
IT GOES –
RECYCLE RIGHT

◆
NOW AVAILABLE AT
NO CHARGE

◆
EARTH DAY
CELEBRATION

◆
ROLL-OFF BOX
SERVICE

◆
BLUE LINE
TRANSFER

SSFSCAVENGER.COM

SSF
SCAVENGER
COMPANY

•
COMMERCIAL/
MULTIFAMILY
NEWSLETTER

Now Available at No-Charge

- Kitchen pails and recyclables tote bags for use in multifamily residential complexes where tenants are ready to step-up their sorting efforts. Limit of 1 pail and 1 tote per living unit. Complex must be participating in our recycling programs to receive the bags and our organics program to receive the pails.



- 23-gallon food scraps collection containers for use in kitchens and break rooms. Limit of 3 per commercial customer. Must be participating in our organics program.

ROLL-OFF BOX SERVICE

The cities of Brisbane, Millbrae and South San Francisco have exclusive franchise



agreements with South San Francisco Scavenger Company for garbage and recycling collection services. This includes services provided with roll-off debris boxes. If a landscaping, construction & demolition, or major clean out is in your future, please contact us for more information or to order an appropriate size box.

BLUE LINE TRANSFER, INC.

500 East Jamie Court ♦ South San Francisco

Public Disposal and Recycling Facility

Monday-Friday, 6 a.m. – 4:30 p.m.
Saturday, 7 a.m. – 4:30 p.m.

- Competitive disposal rates
- Special rates for cooking oil, tires, appliances/electronics, fluorescent lamps & batteries

Note that all loads entering Blue Line must be covered and secured. **There is an additional \$20 fee charged for each uncovered load.**

B.O.P.A. Center

Monday-Saturday, 7 a.m. – 4 p.m.

- No-charge drop-off for San Mateo County residents
 - ✓ Televisions, laptops, computer monitors
 - ✓ Car batteries, antifreeze, motor oil & filters
 - ✓ Latex & oil-based paint—in clearly labeled containers, 10 gallon limit
 - ✓ Sharps containers

Public Buy-Back Center

Monday-Friday, 7 a.m. – 2 p.m.
Saturday, 7 a.m. – 12 p.m.

- For containers with California Redemption Value (CRV)

www.ssfsavenger.com/transfer

SAVE THE DATE

EARTH DAY CELEBRATION

Blue Line Transfer
500 E. Jamie Ct.

April 25, 2020 from 10am-2pm

For more information and to reserve your spot,
visit ssfsavenger.com/EarthDay or call 650.589.4020 x4105.

This free event will be fun for the whole family and includes:

*A backyard composting workshop
hosted from 10am-noon by the San Mateo County Office of
Sustainability*

*A guided tour from 12:15-1:30pm of Blue Line's recycling
& digestion facilities*

Truck demonstrations, games & prizes ongoing from noon-2pm

SOUTH SAN FRANCISCO
SCAVENGER
— COMPANY, INC. —

500 East Jamie Court
South San Francisco, CA 94080
Monday-Friday, 7am-4:30pm

Phone: 650.589.4020
E-mail: info@ssfsavenger.com

Interested in receiving waste-related tips?

Follow Us  
www.facebook.com/ssfsavenger

