

# The Recycler

Winter 2019



## IMPORTANT REMINDERS

### Keep It Clean!

Please do not contaminate recyclables. Scrape and rinse food and beverage containers before placing under the blue lid of your recycling cart. Only put clean, dry paper under the gray lid.



### Recycle Your Cardboard!



Place empty boxes under the gray lid of your recycling cart. Be sure to flatten and cut down first. For large or multiple boxes, please flatten, bundle and place beside your recycling cart for collection. Avoid putting bundles out on rainy days.

### Shut Your Lid!

Keep the lids to all of your carts closed. This will keep critters and rain out—preventing potential messes and keeping recyclable paper items dry. Contact us to make arrangements for the collection of overflow. Extra fees may apply.



### Look and Learn!

Be on the lookout for educational information. If we observe a problem, a notice will be attached to the handle of the offending cart. **Improper sorting and/or overloading can also result in service delays and extra fees.**

### Stash Your Carts!

Put your carts away after they have been emptied. Your city requires that carts be rolled out no more than 12 hours before service and stored out of sight from the street no more than 12 hours after.

SOUTH SAN FRANCISCO  
**SCAVENGER**  
COMPANY, INC.

**650.589.4020**

[www.ssfsavenger.com](http://www.ssfsavenger.com)

### PLEASE RECYCLE RIGHT!

Paper products belong under the gray lid.  
Empty containers belong under the blue lid.

junk mail, newspapers,  
magazines, catalogs,  
shredded paper (contained  
in a paper bag or box),  
packaging, tubes

cans/pans/foil, glass  
bottles/jars, plastic  
bottles/tubs



### Oil filters, household batteries and cell phones are recyclable too!

Place used motor oil filters in a clear zip-top bag, seal, and put under the blue lid of your **recycling** cart.

Place used household batteries and cell phones in a clear zip-top bag, seal, and put on top of the lid to your **garbage** cart. Please put clear tape over both ends of each lithium and 9 volt battery and wrap cell phones in paper.

**SAVE THE DATE**

## EARTH DAY CELEBRATION

**Blue Line Transfer Station  
500 E. Jamie Ct.**

**April 27, 2019 from 10am-noon**

**For more information and to reserve your spot,  
visit [ssfscavenger.com/EarthDay](http://ssfscavenger.com/EarthDay) or call 650.589.4020 x105.**

*This free event will be fun for the whole family and includes:*

*A backyard composting workshop*

*hosted from 10am-noon by the San Mateo County Office of Sustainability*

*A guided tour from 12:15-1:30pm of Blue Line's recycling & digestion facilities*

*Truck demonstrations, games & prizes ongoing from noon-2pm*



## Can Your Ash

Make sure to place fireplace, stove and barbecue ashes in a metal container with a tight fitting lid. Put the container outside and 10 feet or more away from your home and combustibles. Wet the ashes down. Once cold, ashes must be contained (so they do not blow away during collection) and then placed in your garbage cart. For more information and additional fire safety tips, visit these websites:

Cal Fire (California Department of Forestry and Fire Protection) - [www.fire.ca.gov](http://www.fire.ca.gov)

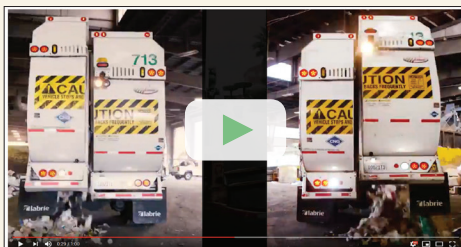
U.S. Fire Administration - [www.usfa.fema.gov](http://www.usfa.fema.gov)

National Fire Protection Association - [www.nfpa.org](http://www.nfpa.org)

## Cart Maintenance

Your Recycling, Organics and Garbage carts are engineered to keep water and critters out, and to withstand years of service. It is the resident's responsibility to keep them relatively clean, but it is our responsibility to repair or replace them as needed. If your cart leaks, has a broken lid or missing wheel, or if it needs a new label on the lid, please let us know. Send an email to [info@ssfscavenger.com](mailto:info@ssfscavenger.com) or call 650.589.4020.

**Ever wonder what happens to your recyclables after they leave the curb? Want confirmation that your sorting efforts are worthwhile?**



**We created a short video just for you! Visit our Facebook page or [ssfscavenger.com/residential](http://ssfscavenger.com/residential) and watch it today!**

## Resource Information

### South San Francisco Scavenger Co.

- ◆ **Roll-Off Box / Mini Box Service**  
Order the right box for your cleaning, construction or landscaping project. We are your exclusive service provider.
- ◆ **On-Call Cleanups**  
Take advantage of your two annual On-Call Cleanups for extra garbage and large items.
- ◆ **Online Bill Pay and Paperless Billing**  
Visit our website to sign up.

### Blue Line Transfer, Inc.

Public Disposal and Recycling Facility

- ◆ **Drop off for San Mateo County Residents**
  - Car batteries
  - Household batteries (\$)
  - Sharps Containers
  - Cooking oil (\$)
  - Fluorescent tubes & bulbs (\$)
  - Used motor oil & filters
  - Latex paint
  - Antifreeze
  - Electronics (\$)

**500 East Jamie Court, SSF • 650.589.4020 • [www.ssfscavenger.com](http://www.ssfscavenger.com)**

Follow Us



On Facebook!

Be the first to hear about events and workshops and to receive updates and tips on the programs we offer. Find us by searching for @ssfscavenger.

