

WASTEMATTERS

DECEMBER 2018

Happy Holidays from all of us at South San Francisco Scavenger Company!
Please remember:

WE RECYCLE CHRISTMAS TREES

- Remove stands and all decorations including lights and tinsel.
- Cut trees in half if taller than 6 feet.
- Do not bag or tie trees.
- Place trees near your garbage and recycling carts/bins for collection.
- Contact us to schedule collection. Trees are collected from multifamily residential properties at no charge. A \$10-\$20 fee is charged per tree (depending on size) collected from a business.



SOUTH SAN FRANCISCO SCAVENGER COMPANY OFFICES AND BLUE LINE TRANSFER WILL CLOSE AT NOON ON CHRISTMAS EVE AND NEW YEAR'S EVE. WE WILL ALSO BE CLOSED ALL DAY ON CHRISTMAS DAY AND NEW YEAR'S DAY.



In the New Year and Beyond... Resolve to Keep it Clean!

- ✓ **Sort waste correctly.** Contaminated recyclables may not be collected. Take the time to learn what is and is not recyclable. Visit our website or give us a call if you have questions.
- ✓ **Make sure your waste containers are the right size.** Lids must close completely. Contact us to increase service or request a special collection of occasional overflow.
- ✓ **Keep waste containers closed at all times.** This will eliminate wind-blown litter and prevent containers from becoming a breeding place for insects and critters.



Container Maintenance

Your Recycling, Organics and Garbage carts and bins are engineered to withstand years of service. It is your responsibility to keep them relatively clean but it is our responsibility to repair or replace them as needed. If your cart or bin leaks, has a broken or missing lid or wheel, or is no longer properly labeled, please let us know. We will repair or replace the bin as needed. You can also request a steam clean; charges may apply. Send an email to info@ssfscavenger.com or call 650.589.4020.

Keep It Clean!



WE RECYCLE
CHRISTMAS TREES

NO COLLECTION
SERVICE ON
CHRISTMAS DAY
OR NEW YEAR'S
DAY

RESOLVE TO KEEP
IT CLEAN

CONTAINER
MAINTENANCE

COMPLIANCE IS
ORGANIC!!

ROLL-OFF BOX
SERVICE

HELPFUL
REMINDERS

INTERESTED IN
WASTE REDUCTION
TIPS FOR THE
HOLIDAY SEASON?

SSFSCAVENGER.COM

SSF
SCAVENGER
COMPANY

•
COMMERCIAL/
MULTIFAMILY
NEWSLETTER

Compliance is Organic!!

Effective January 1, 2019, California Assembly Bill 1826 requires that all businesses generating 4 cubic yards or more of garbage per week implement an organics recycling program. It also requires that all multifamily dwellings with 5 or more living units recycle yard trimmings. Please contact us today for help starting an organics recycling program that will insure your compliance. For more information on AB 1826, visit www.CalRecycle.ca.gov.



ROLL-OFF BOX SERVICE

The cities of Brisbane, Millbrae and South San Francisco have exclusive franchise agreements with South San Francisco Scavenger Company for garbage and recycling collection services. This includes services provided with roll-off debris boxes. If a landscaping, construction & demolition, or major clean out is in your future, please contact us for more information or to order an appropriate size box.

BLUE LINE TRANSFER, INC.

500 East Jamie Court ♦ South San Francisco

Public Disposal and Recycling Facility

Monday-Friday, 6 a.m. – 4:30 p.m.
Saturday, 7 a.m. – 4:30 p.m.

- Competitive disposal rates
- Reduced rates for clean loads of wood, yard waste, dirt, rock & concrete
- Special rates for cooking oil, tires, appliances/electronics, fluorescent lamps & batteries

Note that all loads entering Blue Line must be covered and secured. **There is an additional \$20 fee charged for each uncovered load.**

B.O.P.A. Center

Monday-Saturday, 7 a.m. – 4 p.m.

- No-charge drop-off for San Mateo County residents
 - ✓ Televisions, laptops, computer monitors
 - ✓ Car batteries, antifreeze, motor oil & filters
 - ✓ Latex & oil-based paint—in clearly labeled containers, 10 gallon limit
 - ✓ Sharps containers

Public Buy-Back Center

Monday-Friday, 7 a.m. – 2 p.m.
Saturday, 7 a.m. – 12 p.m.

- For containers with California Redemption Value (CRV)

www.ssfscavenger.com/transfer

HELPFUL REMINDERS\$

Still Receiving a Paper Invoice?

A variety of convenient paperless billing and payment options now exist. Visit www.ssfscavenger.com/paperless.

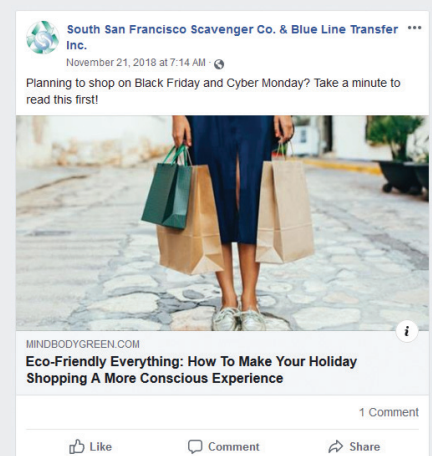
Past Due?

Payments are posted to the invoice number on the remittance slip. To avoid fees and an interruption to service, please be sure to pay your oldest invoice first.

Interested in waste reduction tips for the holiday season?

Have tips to share?

Join us on Facebook!
Search for @ssfscavenger.



SOUTH SAN FRANCISCO
SCAVENGER
— COMPANY, INC. —

500 East Jamie Court
South San Francisco, CA 94080
Monday-Friday, 7am-4:30pm

Phone: **650.589.4020**
E-mail: info@ssfscavenger.com