

Is Your Business in Compliance?

Effective January 1, 2019, California Assembly Bill 1826 requires that **all businesses generating 4 cubic yards or more of garbage per week** implement an organics recycling program. Please contact us today for assistance. For more information on AB 1826, visit www.CalRecycle.ca.gov.



Edible Food Donation

Need to get rid of edible food? It's better to donate it than to recycle it.

If you are a permitted food facility in San Mateo County, Environmental Health Services invites you to participate in the Safe Surplus Food Donation Program. For more information, visit www.smchealth.org/fooddonation.

Not a permitted facility? Try connecting with Second Harvest Food Bank or Peninsula Food Runners. Visit www.shfb.org and www.peninsulafoodrunners.org.

Please note that food donors are protected from liability for their good faith donations under the Bill Emerson Good Samaritan Food Donation Act.

KNOW WHERE IT GOES – SORT SMART!

Foreign import policy changes continue to negatively impact recycling. There is no tolerance for contaminated materials. Proper sorting is critical!

Please take the time to review your recycling program and adjust as needed.

1. Make sure all collection bins are clearly labeled. Create your own labels and signs or use ours. Printer-friendly files can be found at www.ssfscavenger.com. Simply navigate to the Educational Materials page of our Multifamily or Commercial section.
2. Regularly remind all staff/tenants, including custodians, to sort correctly and report any problems.
3. Contact us with any questions or for help training staff/tenants.



Remember to scrape & rinse any food or beverage containers before recycling!

◆ MANDATORY ORGANICS RECYCLING

◆ EDIBLE FOOD DONATION

◆ PLEASE SORT SMART!

◆ CONSTRUCTION/DEMOLITION PROJECT?

◆ COASTAL CLEANUP DAY

◆ GREEN BUSINESS EVENTS

◆ HOLIDAY REMINDER

SSFSCAVENGER.COM

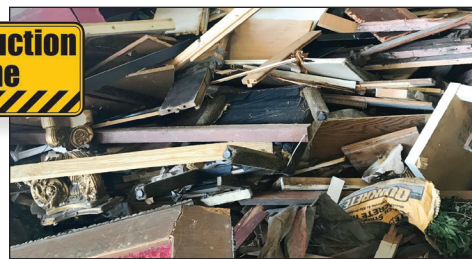
SSF
SCAVENGER
COMPANY

• COMMERCIAL/
MULTIFAMILY
NEWSLETTER

DOING A CONSTRUCTION OR DEMOLITION PROJECT?

South San Francisco Scavenger Company provides debris box service for construction & demolition materials. We average 65% landfill diversion of mixed loads. Higher diversion can be achieved by recycling clean, source-separated loads of cardboard, wood, sheet plastic, dirt/rock/concrete, yard trimmings, carpet and scrap metal.

Trying to earn maximum points for a LEED project? Our Sustainability Manager can help. Contact us today!



BLUE LINE
TRANSFER, INC.

500 East Jamie Court ♦ South San Francisco

Public Disposal and Recycling Facility

Monday-Friday, 6 a.m. – 4:30 p.m.
Saturday, 7 a.m. – 4:30 p.m.

- Competitive disposal rates
- Reduced rates for clean loads of wood, yard waste, dirt, rock & concrete
- Special rates for cooking oil, tires, appliances/electronics, fluorescent lamps & batteries

Note that all loads entering Blue Line must be covered and secured. **There is an additional \$20 fee charged for each uncovered load.**

B.O.P.A. Center

Monday-Saturday, 7 a.m. – 4 p.m.

- San Mateo County residents may drop-off the following items for no charge.
 - ✓ Televisions, laptops, computer monitors
 - ✓ Car batteries, antifreeze, motor oil & filters
 - ✓ Latex & oil-based paint—in clearly labeled containers, 10 gallon limit
 - ✓ Sharps containers

Public Buy-Back Center

Monday-Friday, 7 a.m. – 2 p.m.
Saturday, 7 a.m. – 12 p.m.

- For containers with California Redemption Value (CRV)

www.ssfscavenger.com/transfer

SAVE THE DATE!

Green Business Program Lunch & Learn

**Thursday, September 6,
12:00 – 1:30 pm**

Brisbane City Hall, Community Room, 50 Park Place, Brisbane
Complimentary lunch will be served.

RSVP at www.smcgreenlunch.eventbrite.com



Green Business 101

Thursday, September 27, 6:00 – 8:00 pm

Lyngso Garden Materials, 345 Shoreway Road, San Carlos
Complimentary refreshments will be served.

RSVP at www.green101.eventbrite.com

Coastal Cleanup Day

Saturday, September 15

Various events and locations—
find the one nearest you by at

www.smchealth.org/general-information/coastal-and-bay-cleanup-day



HOLIDAY REMINDER

Our office and Blue Line Transfer's Public Disposal Facility
close at noon on Thanksgiving Day.

SOUTH SAN FRANCISCO
SCAVENGER
— COMPANY, INC. —

500 East Jamie Court
South San Francisco, CA 94080

Monday-Friday, 7am-4:30pm

Phone: **650.589.4020**

E-mail: info@ssfscavenger.com

Interested in receiving waste-related tips?



[Follow Us!](#)



You can find us by searching for [@ssfscavenger](#).