

WASTEMATTERS

SEPTEMBER 2017

KEEP IT CLEAN!

*Litter prevention is a priority.
Please do your part to keep our
community clean.*

RIGHT SIZE YOUR COLLECTION SERVICE

If your collection carts or bins are regularly full or overflowing, please contact us to arrange for more service. We can provide additional or larger carts or bins as well as additional service days.

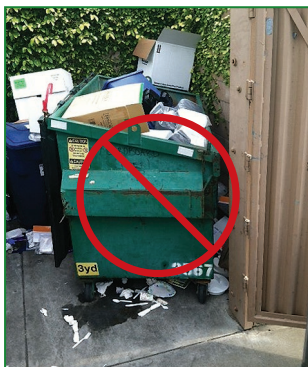
KEEP CART & BIN LIDS CLOSED

Open lids make it easy for birds, critters, and wind to turn what was contained waste into litter. Municipal codes in Brisbane, Millbrae and South San Francisco require that lids remain tightly closed except when material is being placed inside and during collection. Please contact us if your cart or bin has a broken or missing lid.



MAINTAIN A LITTER-FREE COLLECTION AREA

Put all trash and recyclables inside the appropriate cart or bin and keep the surrounding area swept and clear. Contact us to arrange for collection of occasional overflow.

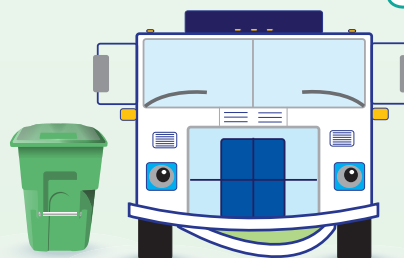


Thank You!



During the first half of 2017, we delivered nearly 6,500 tons of food waste, food-soiled paper and yard trimmings to our Anaerobic Digestion Facility. This material was collected from **Organics** carts and bins across our service area. Thank you for helping us to send less material to landfill, to produce fuel for our trucks, and to create nutrient-rich soil for farms.

 **Your Food Waste Gives Me Gas!** 



KEEP IT CLEAN!

THANK YOU!

DOING A
CONSTRUCTION
OR DEMOLITION
PROJECT?

CALIFORNIA
CONTINUES
COMMITMENT
TO REDUCE
GREENHOUSE GAS
EMISSIONS

FOOD FOR
THOUGHT

HOLIDAY
REMINDER

BLUE LINE
TRANSFER
PUBLIC DISPOSAL
& RECYCLING
FACILITY

B.O.P.A. CENTER

SSFSCAVENGER.COM

SSF
SCAVENGER
COMPANY

COMMERCIAL/
MULTIFAMILY
NEWSLETTER

DOING A CONSTRUCTION OR DEMOLITION PROJECT?

South San Francisco Scavenger Company provides debris box service for construction & demolition materials. We average 65% landfill diversion of mixed loads. Higher diversion can be achieved by recycling clean, source-separated loads of cardboard, wood, drywall, sheet plastic, dirt/rock/concrete, tree/yard trimmings, carpet and scrap metal.



BLUE LINE TRANSFER, INC.

500 East Jamie Court ♦ South San Francisco

Public Disposal and Recycling Facility

Monday-Friday, 6 a.m. – 4:30 p.m.
Saturday, 7 a.m. – 4:30 p.m.

- Competitive disposal rates
- Reduced rates for clean loads of wood, yard waste, dirt, rock & concrete
- Special rates for cooking oil, tires, appliances/electronics, fluorescent lamps & batteries

Note that all loads entering Blue Line must be covered and secured. **There is an additional \$20 fee charged for each uncovered load.**

B.O.P.A. Center

Monday-Saturday, 7 a.m. – 4 p.m.

- No-Charge drop-off for San Mateo County residents only (no commercial)
 - ✓ Televisions, laptops, computer monitors
 - ✓ Car batteries, antifreeze, motor oil & filters
 - ✓ Latex & oil-based paint—in clearly labeled containers, 10 gallon limit
 - ✓ Sharps containers

Public Buy-Back Center

Monday-Friday, 7 a.m. – 2 p.m.
Saturday, 7 a.m. – 12 p.m.

- For containers with California Redemption Value (CRV)

www.ssfsavenger.com/transfer

CALIFORNIA CONTINUES COMMITMENT TO REDUCE GREENHOUSE GAS EMISSIONS

In September 2016, Governor Brown signed Senate Bill 1383, establishing targets to achieve

a 50% reduction in disposed organic waste by 2020 and a 75% reduction by 2025. SB 1383, along with SB 32, AB 341 and AB 1826, is part of California's push to reduce greenhouse gas emissions.



To help our communities reach the goals set by the State, South San Francisco Scavenger Company provides organic waste collection services and operates an anaerobic digestion facility to process the materials collected. Contact us today to learn how you can participate!

For more information visit:

www.CalRecycle.ca.gov

www.ssfsavenger.com/ad-facility

FOOD FOR THOUGHT

Increasing food waste prevention, encouraging edible food rescue, and building more anaerobic digestion facilities like ours will help reduce greenhouse gas emissions from organic waste disposed in California's landfills. To learn how you can reduce food waste, visit www.SaveTheFood.com and www.StopFoodWaste.org. For information about donating excess food to those in need, visit www.shfb.org.

SAVETHEFOOD.COM



HOLIDAY REMINDER

Our office and Blue Line Transfer close at noon on Thanksgiving Day.

SOUTH SAN FRANCISCO
SCAVENGER
— COMPANY, INC. —

500 East Jamie Court
South San Francisco, CA 94080

Monday-Friday, 7am-4:30pm

Phone: **650.589.4020**

E-mail: info@ssfsavenger.com

Interested in receiving waste-related tips?

Follow Us  On Facebook! 
You can find us by searching for [@ssfsavenger](https://www.facebook.com/ssfsavenger).