

WASTEMATTERS

WINTER 2017

WHAT'S IN YOUR GARBAGE?

Dumpster diving might not be your thing, but conducting a regular review of what you're sending to the landfill is a good idea. You might be surprised to find a number of recyclable and compostable items. If that's the case, stepping up your waste sorting efforts will have favorable economic and environmental impacts, plus it will help you comply with recent legislation.

Common items to look for:

Recyclables



- ◆ Cardboard
- ◆ Paper products including junk mail, newspaper, magazines, office paper and paper packaging
- ◆ Aluminum, glass, plastic and bi-metal containers excluding bags, Styrofoam and Pyrex

Organics



- ◆ Food scraps including meat & bones, fruit peels & pits, egg shells, coffee grounds and more
- ◆ Food-soiled paper including pizza boxes, greasy paper plates/napkins, and empty paper coffee cups
- ◆ Wax paper and wax-coated cardboard
- ◆ Yard trimmings

We provide recyclables collection for no-charge and organics collection at a discount. In addition, we provide educational materials and staff/tenant training assistance. Contact us today for help adding or adjusting services.

NOW AVAILABLE NO-CHARGE:

Kitchen pails and recyclables tote bags for use in multifamily residential complexes where tenants are ready to step-up their sorting efforts. Limit of 1 pail and 1 tote per living unit.



23-gallon food scraps collection containers for use in kitchens and break rooms. Limit of 3 per commercial customer.



WE RECYCLE CHRISTMAS TREES!

- ◆ Remove stands and all decorations including lights and tinsel.
- ◆ Cut trees in half if taller than 6 feet.
- ◆ Do not bag or tie trees.
- ◆ Place trees near your garbage and recycling carts/bins for collection.
- ◆ Contact us to schedule collection. Trees are collected from multifamily residential properties at no charge. A \$10-\$20 fee is charged per tree (depending on size) collected from a business.



WHAT'S
IN YOUR
GARBAGE?

NOW
AVAILABLE
NO-CHARGE

WE RECYCLE
CHRISTMAS
TREES!

CONTAINER
MAINTENANCE

ATTENTION
SMALL
BUSINESSES!

DEBRIS BOX
SERVICE

HELPFUL
REMINDERS

VISIT US
ONLINE

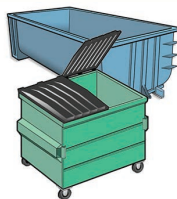
SSFSCAVENGER.COM

SSF
SCAVENGER
COMPANY

•
COMMERCIAL/
MULTIFAMILY
NEWSLETTER

Debris Box Service

The cities of Brisbane, Millbrae and South San Francisco have exclusive franchise agreements with South San Francisco Scavenger Company for garbage and recycling services. This includes services provided with roll-off debris boxes. If a landscaping, construction & demolition, or major clean-out is in your future, please contact us for more information or to order an appropriate size box.



Attention Small Businesses!

San Mateo County Environmental Health provides information and disposal options for small businesses that generate hazardous waste. Visit www.smchealth.org/vsqq or call 1-800-207-8222 for more information.



CONTAINER MAINTENANCE

Your Recycling, Organics and Garbage carts and bins are engineered to withstand years of service. It is our customer's responsibility to keep them relatively clean but it is our responsibility to repair or replace them as needed. If your cart or bin has a broken lid or missing wheel, or if it leaks, please let us know. You can request a steam clean or locking lids; charges may apply. Send an email to info@ssfscavenger.com or call 650.589.4020.

HELPFUL REMINDERS

Still Receiving a Paper Invoice?

A variety of convenient paperless billing and payment options now exist. Visit our website at www.ssfscavenger.com/paperless for a list.

Donations Welcome!

RAFT & SCRAP are two separate organizations that welcome donations of clean, reusable materials. If your business has waste items that could be used in art or science projects, visit www.RAFT.net and www.SCRAP-SF.org for more information.

CALGreen Provisions Now Effective!

The California Green Building Standards Code (CALGreen) added new provisions effective January 1, 2017.

- ◆ Newly constructed buildings and demolition projects shall divert from landfills at least 65% of the waste materials generated during the project.
- ◆ All locally permitted additions and alterations to non-residential buildings or structures shall divert at least 65% of nonhazardous and demolition materials.
- ◆ Additions and alterations to residential buildings that increase the structure's conditioned area, volume or size are also required to meet the 65% minimum diversion requirement.

South San Francisco Scavenger and Blue Line Transfer can help you comply. For more information, visit www.bsc.ca.gov and contact us!

BLUE LINE TRANSFER, INC.

500 East Jamie Court ♦ South San Francisco

Public Disposal and Recycling Facility

Monday-Friday, 6 a.m. – 4:30 p.m.
Saturday, 7 a.m. – 4:30 p.m.

- Competitive disposal rates
- Reduced rates for clean loads of wood, yard waste, dirt, rock & concrete
- Special rates for cooking oil, tires, appliances/electronics, fluorescent lamps & batteries

Note that all loads entering Blue Line must be covered and secured. **There is an additional \$20 fee charged for each uncovered load.**

B.O.P.A. Center

Monday-Saturday, 7 a.m. – 4 p.m.

- No-charge drop-off for San Mateo County residents
 - ✓ Televisions, laptops, computer monitors
 - ✓ Car batteries, antifreeze, motor oil & filters
 - ✓ Latex & oil-based paint—in clearly labeled containers, 10 gallon limit
 - ✓ Sharps containers

Public Buy-Back Center

Monday-Friday, 7 a.m. – 2 p.m.
Saturday, 7 a.m. – 12 p.m.

- For containers with California Redemption Value (CRV)

www.ssfscavenger.com/transfer

SOUTH SAN FRANCISCO
SCAVENGER
— COMPANY, INC. —

500 East Jamie Court
South San Francisco, CA 94080

Monday-Friday, 7am-4:30pm

Phone: **650.589.4020**

E-mail: info@ssfscavenger.com

Follow Us



On Facebook!

Facebook is a great way to stay connected!

You can find us by searching for @ssfscavenger.

