

The Recycler

Winter 2017



Go Green Cart!



We are excited to report that nearly 11,000 tons of organic waste was processed in our Anaerobic Digestion Facility in 2016. This is an increase of more than 35% from 2015 and means that we met our goal. Thank you for feeding your green cart!

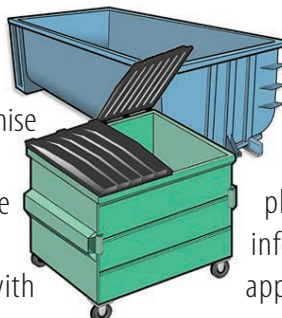
Would you like to see how our anaerobic digesters work? Join us for the tour portion of our upcoming Earth Day Celebration (*details on right*).

Cart Maintenance

Your **Recycling**, **Organics** and **Garbage** carts are engineered to keep water and critters out, and to withstand years of service. It is the resident's responsibility to keep them relatively clean but it is our responsibility to repair or replace them as needed. If your cart has a broken lid or missing wheel, or if it leaks, please let us know. Send an email to info@ssfscavenger.com or call 650.589.4020.

Debris Box Service

The cities of Brisbane, Millbrae and South San Francisco have exclusive franchise agreements with South San Francisco Scavenger for garbage and recycling services. This includes services provided with



roll-off debris boxes. If a landscaping, construction & demolition, or major clean-out is in your future, please contact us for more information or to order an appropriate size box.

SOUTH SAN FRANCISCO
SCAVENGER

COMPANY, INC.

650.589.4020

www.ssfscavenger.com

SIGN UP!

Earth Day Celebration

**Blue Line Transfer Station
500 E. Jamie Ct.**

April 22, 2017

10am-12pm—Annual Backyard
Composting Workshop

*Sponsored by San Mateo County
Office of Sustainability*

Noon-1:30pm—Blue Line Facility Tour

Call 650.589.4020 x105 before noon
on April 20 to reserve a space.

**When leaving a message, be sure to
state your name, the number in your
party, and if you will be attending the
workshop, the tour, or both.**



KEEP BRISBANE LITTER FREE

- ✓ Make sure cart lids are kept closed.
- ✓ Breakdown packaging materials and branches so they fit completely inside the appropriate cart.
- ✓ Flatten and bundle large boxes. Set bundle next to your recycling cart for collection.
- ✓ Contact us to arrange for collection of overflow or large items.

Got HHW?



Reduce the negative impacts of household hazardous waste (HHW) by following these tips:

- Choose less toxic alternatives when possible. Visit www.smchealth.org/hhw for a list.
- Buy only what you need.
- Give away hazardous products you cannot use, or dispose of them properly.
 - ◆ We provide curbside collection of household batteries, motor oil and filters on your normal collection day. Batteries, cell phones and oil filters must be sealed in clear plastic bags and placed in your blue recycling cart along with bottles and cans. Please bag batteries separate from filters. Motor oil must be in a sturdy, labeled container with a secure screw-on lid. Containers should be placed at the curb next to your recycling cart.
 - ◆ San Mateo County hosts free HHW drop-off events. Visit www.smchealth.org/hhw or call 650.363.4718 for days, times, locations, and a list of acceptable items. An appointment is required.
 - ◆ Up to 10 gallons of latex and oil base paint in original containers with labels can be dropped off for no charge at any location listed on PaintCare.org.
 - ◆ Fluorescent bulbs and tubes can be dropped off at Home Depot and other stores. Check with your favorite retailer to see if they have a take-back program.
 - ◆ Household and automotive batteries, motor oil, paint, antifreeze and sharps can be dropped off at Blue Line Transfer at no charge to residential customers. Fluorescent bulbs and tubes are also accepted but fees apply (*\$1-\$4 per bulb/tube*). Visit www.ssfscavenger.com/transfer-station for hours and additional information.

Document Destruction Service

The deadline to file income tax returns is rapidly approaching! After you complete this year's submittal, gather old but still sensitive documents and make sure they are properly destroyed.



Call us at 650.589.4020 to schedule an appointment. There is a minimum charge of \$50 for us to come to you and of \$35 if you come to Blue Line Transfer. This charge covers destruction of up to 10 boxes of documents. A \$5 charge applies to each additional box.

HELPFUL REMINDER

Still Receiving a Paper Invoice?

A variety of convenient paperless billing and payment options now exist.

Visit our website at www.ssfscavenger.com/paperless for a list.

Resource Information

South San Francisco Scavenger Co.

- ◆ **Debris Box / Mini Box Service**
Order the right box for your cleaning, construction or landscaping project. We are your exclusive service provider.
- ◆ **On-Call Cleanups**
Take advantage of your two annual On-Call Cleanups for extra garbage and large items.
- ◆ **Online Bill Pay and Paperless Billing**
Visit our website to sign up.

Blue Line Transfer, Inc.

Public Disposal and Recycling Facility

- ◆ **Drop off for San Mateo County Residents**
 - Car batteries
 - Household batteries (\$)
 - Sharps Containers
 - Cooking oil (\$)
 - Fluorescent tubes & bulbs (\$)
 - Used motor oil & filters
 - Latex paint
 - Antifreeze
 - Electronics (\$)

500 East Jamie Court, SSF • 650.589.4020 • www.ssfscavenger.com

Follow Us  On Facebook!

Be the first to hear about events and workshops and to receive updates and tips on the programs we offer. Find us by searching for @ssfscavenger.

